

PLAT OF PLAT NO. 7, LOBLOLLY BAY, A P.U.D.

P.U.D. PHASE 17

BEING A REPLAT OF ALL OF PARCEL 'D-1', PLAT NO. 2, LOBLOLLY BAY, A P.U.D., RECORDED IN PLAT BOOK 10, PAGE 57, AND A PORTION OF LOT 32, GOMEZ GRANT, PLAT BOOK 1, PAGE 80, TOWNSHIP 39 SOUTH, RANGE 42 EAST, MARTIN COUNTY, FLORIDA.

SEPTEMBER, 1989

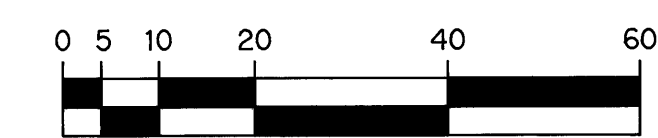
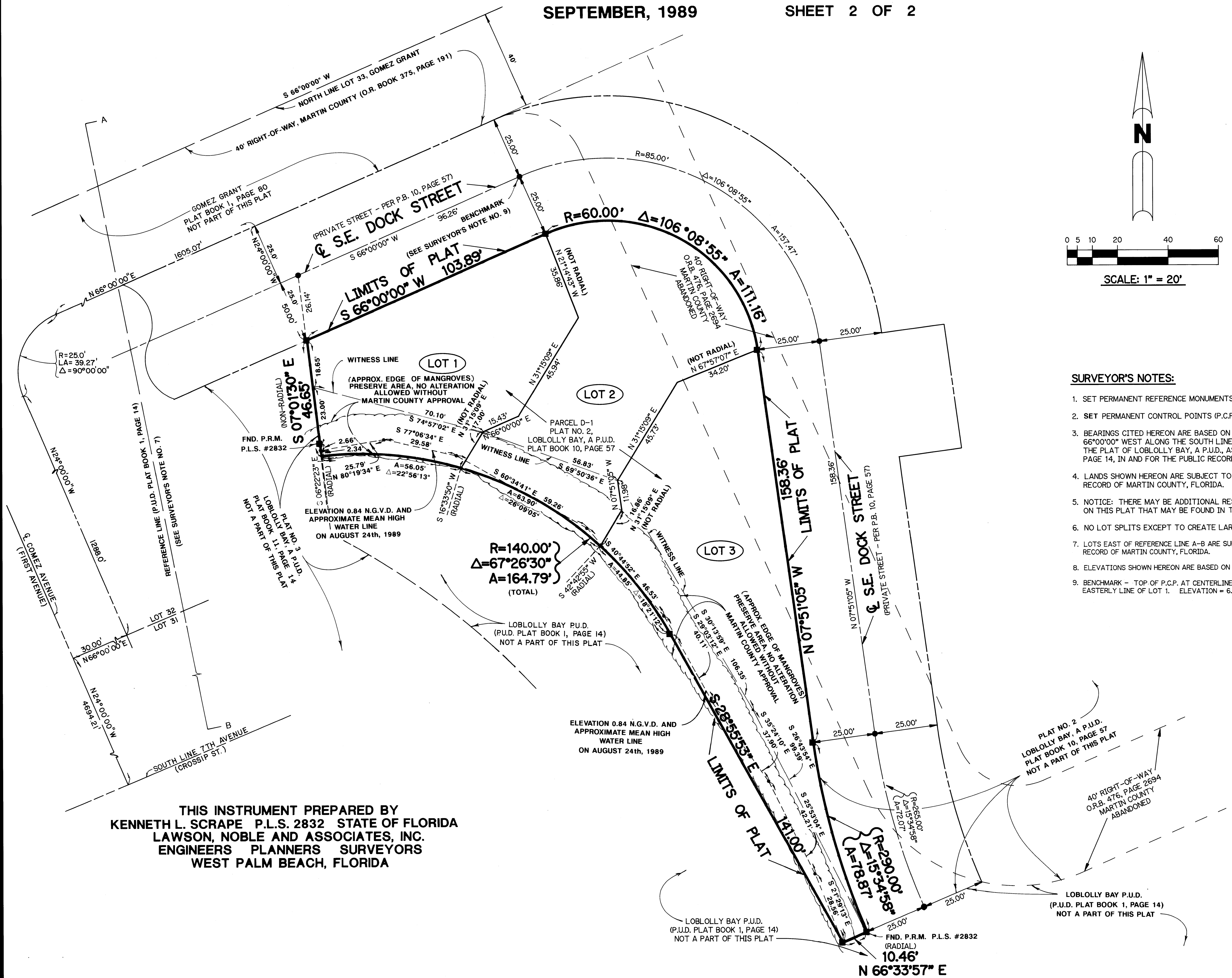
SHEET 2 OF 2

I, MARSHA STILLER, CLERK OF THE CIRCUIT COURT OF MARTIN COUNTY, FLORIDA, HEREBY CERTIFY THAT THIS PLAT WAS FILED FOR RECORD IN PLAT BOOK 12, PAGE 18, MARTIN COUNTY, FLORIDA, PUBLIC RECORDS, THIS DAY OF _____, A.D., 1989.

MARSHA STILLER, CLERK
CIRCUIT COURT
MARTIN COUNTY, FLORIDA

BY: _____
DEPUTY CLERK

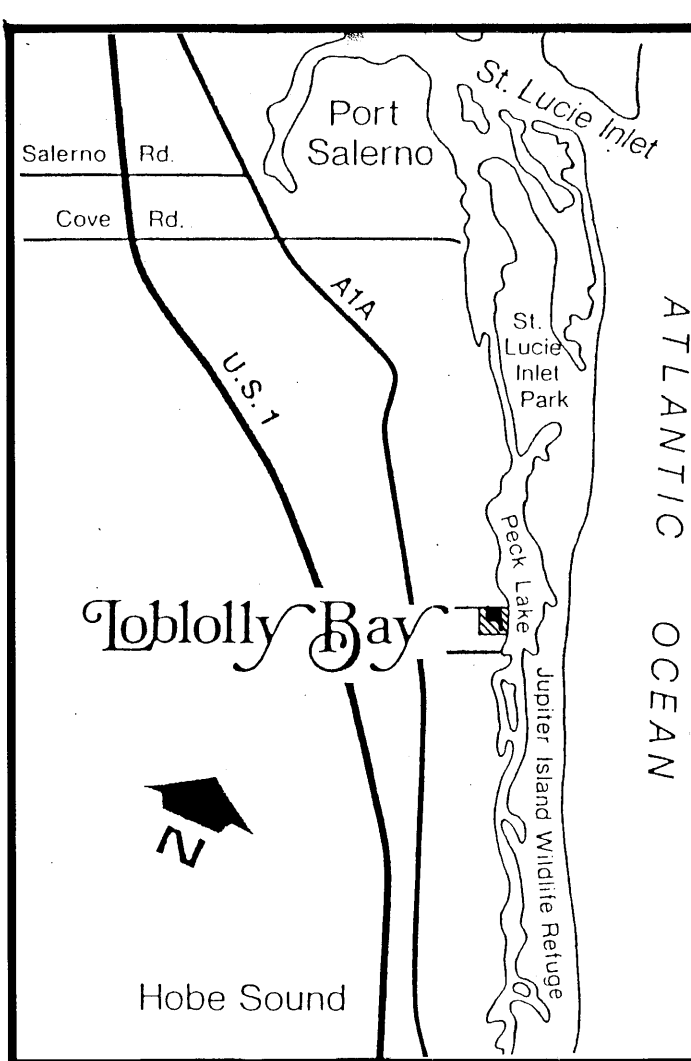
FILE NO: _____



SCALE: 1" = 20'

SURVEYOR'S NOTES:

1. SET PERMANENT REFERENCE MONUMENTS (P.R.M.'S) ARE DESIGNATED THUS: ■
2. SET PERMANENT CONTROL POINTS (P.C.P.'S) ARE DESIGNATED THUS: ●
3. BEARINGS CITED HEREON ARE BASED ON AN ASSUMED BEARING OF SOUTH 66°00'00" WEST ALONG THE SOUTH LINE OF PARCEL "D", ACCORDING TO THE PLAT OF LOBLOLLY BAY, A P.U.D., AS RECORDED IN P.U.D. PLAT BOOK 1, PAGE 14, IN AND FOR THE PUBLIC RECORDS OF MARTIN COUNTY, FLORIDA.
4. LANDS SHOWN HEREON ARE SUBJECT TO RESTRICTIONS OF RECORD OF MARTIN COUNTY, FLORIDA.
5. NOTICE: THERE MAY BE ADDITIONAL RESTRICTIONS THAT ARE NOT RECORDED ON THIS PLAT THAT MAY BE FOUND IN THE PUBLIC RECORDS OF THIS COUNTY.
6. NO LOT SPLITS EXCEPT TO CREATE LARGER LOTS.
7. LOTS EAST OF REFERENCE LINE A-B ARE SUBJECT TO RESTRICTIONS OF RECORD OF MARTIN COUNTY, FLORIDA.
8. ELEVATIONS SHOWN HEREON ARE BASED ON N.G.V.D. ADJUSTMENT OF 1929.
9. BENCHMARK - TOP OF P.C.P. AT CENTERLINE P.C. ON S.E. DOCK STREET AT EASTERLY LINE OF LOT 1. ELEVATION = 6.41 FEET.



LOCATION MAP
N.T.S.

THIS INSTRUMENT PREPARED BY
KENNETH L. SCRAPE P.L.S. 2832 STATE OF FLORIDA
LAWSON, NOBLE AND ASSOCIATES, INC.
ENGINEERS PLANNERS SURVEYORS
WEST PALM BEACH, FLORIDA